

Indicative Projects



NH-58, Meerut - Muzaffarnagar, Uttar Pradesh



SH-31, Jaora - Nayagoan, Madhya Pradesh



NH-67, Trichy- Thanjavur, Tamil Nadu

StrataWall

StrataWall is a T-shaped / Square shaped concrete panel-faced reinforced soil wall system. The granular backfill is reinforced with StrataGrid to create an internally stabilized mass of reinforced soil which withstands both static as well as dynamic loads.



Highlights

- Positive connection between geogrid and fascia
- Galvanized connecting rod with a PVC sleeve is extremely safe
- RCC panels offer strong fascia
- Extremely stable system
- Ideal for very high walls
- System carries good amount of acceptance amongst the user and the consultant community
- Offers high ground coverage by StrataGrid

Strata Geosystems (India) Pvt. Ltd., established in 2004, is a joint venture with Strata Systems Inc., USA (part of the 130-year old Glen Raven group of companies). Strata provides end-to-end technical solutions, from design to execution for geotechnical applications such as reinforced soil walls (flyovers, road over bridges etc.), soil and embankment stabilisation, reinforced steep slopes, reinforced foundations, slope protection, load support for paved and unpaved roads and bearing capacity improvement, landfills and reservoirs. We are renowned for our quality, durability and cost effectiveness and manufacture conforming to strict international quality standards. Our committed team of experienced design engineers and project implementation specialists ensure timely and accurate installation.

Contact details

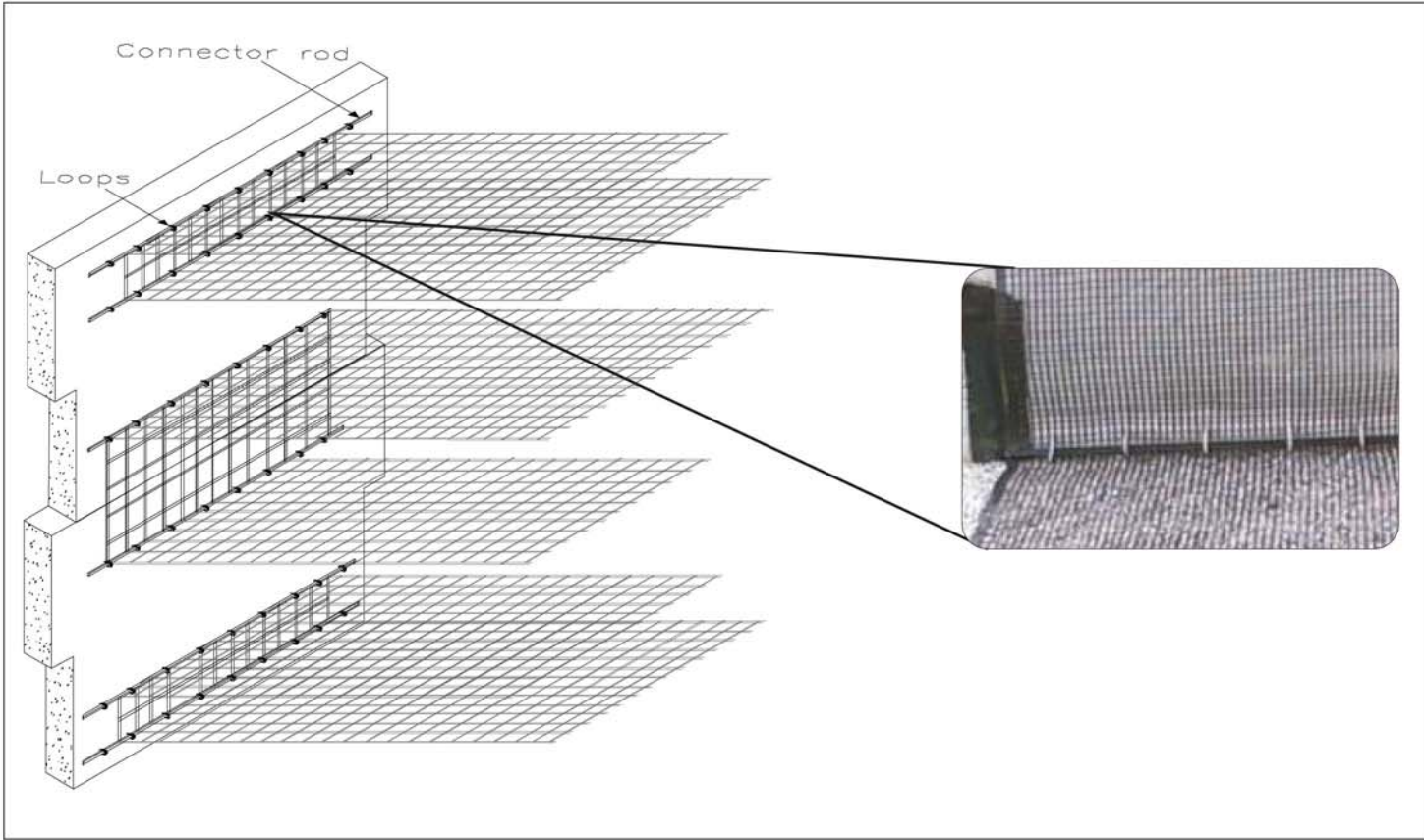
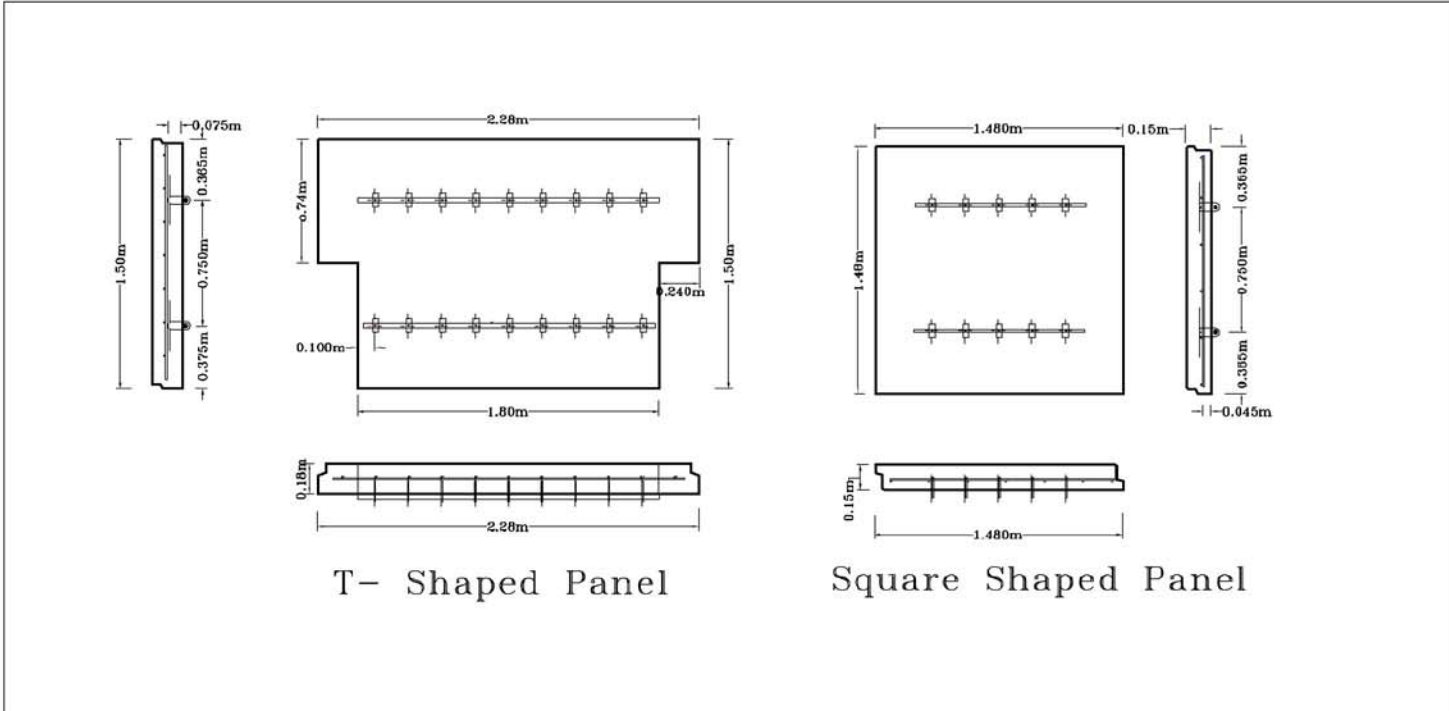
317, Tantia Jogani Industrial Premises,
J. R. Boricha Marg, Lower Parel (East), Mumbai 400 011
Tel.: +91 22 4063 5100 | Fax: +91 22 4063 5199
info@strataindia.com | www.strataindia.com



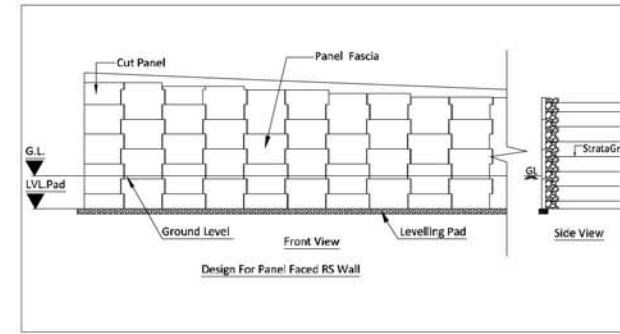
Technical details

StrataGrid is connected to the concrete panels using a positive mechanical connection of galvanized steel loops and PVC covered galvanized steel rod.

StrataWall is a near vertical reinforced soil wall which may be constructed as a single monolith or in steps. The facing being large precast slabs of around 3 sqm. They can be rendered with aesthetically pleasing surfaces. StrataWall is a cost effective alternative to comparable steel soil reinforcement or conventional reinforced cement concrete retaining walls. StrataWall panels are precast at project site resulting in easy availability and faster construction.



How it works



Step 1: Design of the Structure

Step 2 : Base Course Preparation



Step 3: Casting of Levelling Pad

Step 4 : Place StrataWall on Levelling Pad



Step 5: Placement of StrataGrid

Step 6 : Grading of Backfill



Step 7: Installation of StrataGrid

Step 8 : Backfill placement



Step 9: Compaction of Soil

Step 10 : Completed Wall